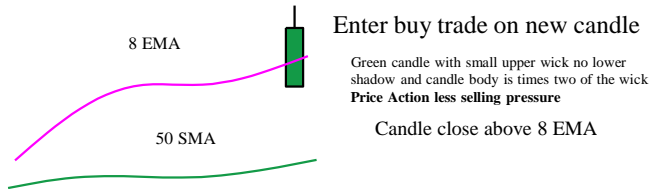
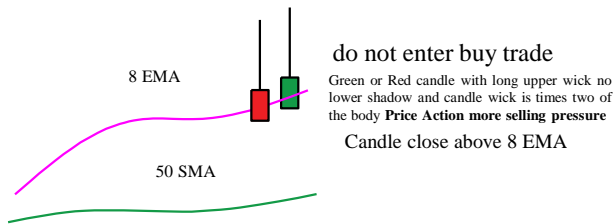


Time Frame: 1H, TP 25 pips, SL 15 Pips, Lot size: 0.20

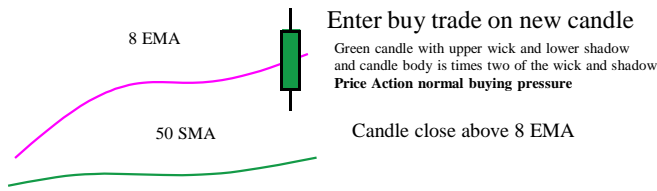
Buying



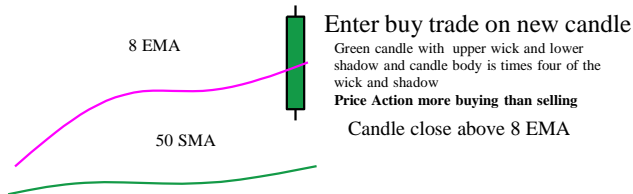
Enter buy trade on new candle
Green candle with small upper wick no lower shadow and candle body is times two of the wick
Price Action less selling pressure
Candle close above 8 EMA



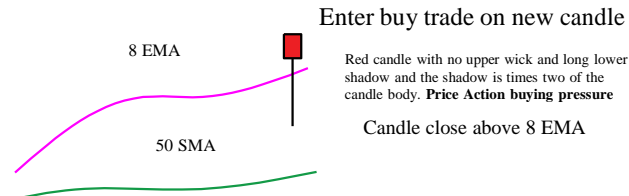
do not enter buy trade
Green or Red candle with long upper wick no lower shadow and candle wick is times two of the body
Price Action more selling pressure
Candle close above 8 EMA



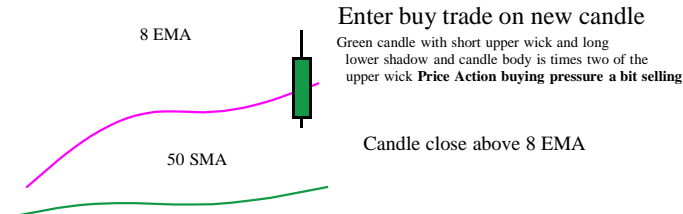
Enter buy trade on new candle
Green candle with upper wick and lower shadow and candle body is times two of the wick and shadow
Price Action normal buying pressure
Candle close above 8 EMA



Enter buy trade on new candle
Green candle with upper wick and lower shadow and candle body is times four of the wick and shadow
Price Action more buying than selling
Candle close above 8 EMA

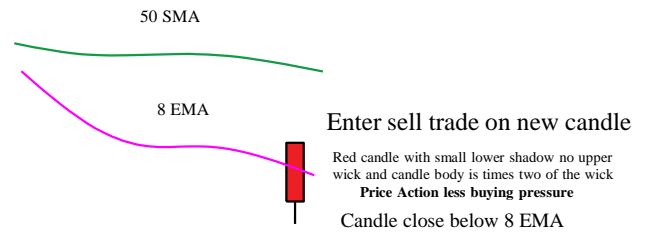


Enter buy trade on new candle
Red candle with no upper wick and long lower shadow and the shadow is times two of the candle body.
Price Action buying pressure
Candle close above 8 EMA

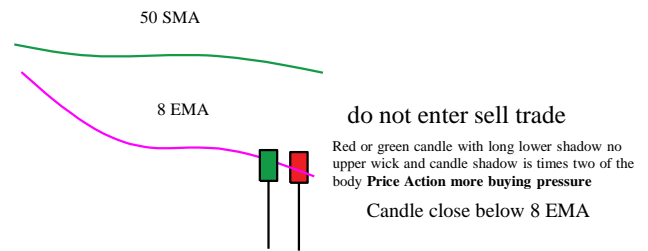


Enter buy trade on new candle
Green candle with short upper wick and long lower shadow and candle body is times two of the upper wick
Price Action buying pressure a bit selling
Candle close above 8 EMA

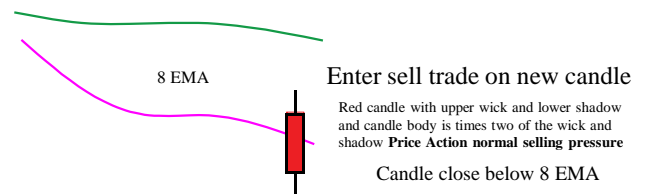
Selling



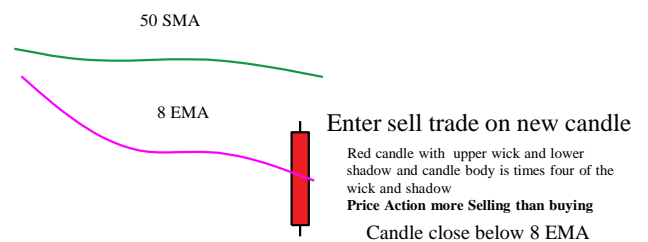
Enter sell trade on new candle
Red candle with small lower shadow no upper wick and candle body is times two of the wick
Price Action less buying pressure
Candle close below 8 EMA



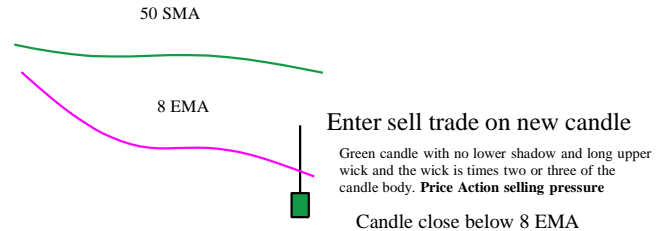
do not enter sell trade
Red or green candle with long lower shadow no upper wick and candle shadow is times two of the body
Price Action more buying pressure
Candle close below 8 EMA



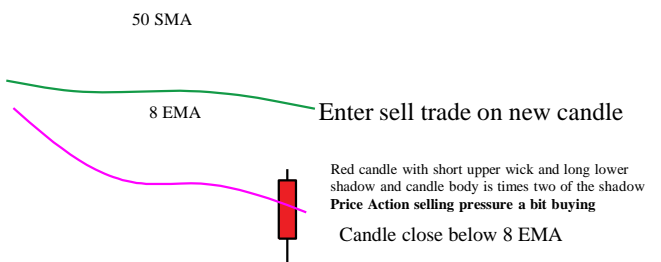
Enter sell trade on new candle
Red candle with upper wick and lower shadow and candle body is times two of the wick and shadow
Price Action normal selling pressure
Candle close below 8 EMA



Enter sell trade on new candle
Red candle with upper wick and lower shadow and candle body is times four of the wick and shadow
Price Action more Selling than buying
Candle close below 8 EMA



Enter sell trade on new candle
Green candle with no lower shadow and long upper wick and the wick is times two or three of the candle body.
Price Action selling pressure
Candle close below 8 EMA



Enter sell trade on new candle
Red candle with short upper wick and long lower shadow and candle body is times two of the shadow
Price Action selling pressure a bit buying
Candle close below 8 EMA